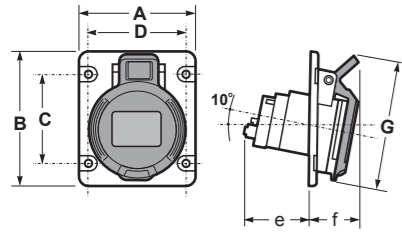


1.1 CONEXIÓN POR TORNILLOS SpeedPro
SCREW CONNECTION SpeedPro

BASES DE CUADRO INCLINADAS / ANGLED PANEL SOCKETS

SpeedPRO IP44 75x85 16A / 80x95 32A
base de cuadro inclinada 10° / angled panel socket 10°



Poles	16A			32A		
	3	4	5	3	4	5
A	75	75	75	80	80	80
B	85	85	85	95	95	95
C	60	60	60	70	70	70
D	60	60	60	60	60	60
e	45	45	45	60	60	60
f	26	34	37	40	40	40
G	86	94	102	108	108	108
Connection type	Conexión por tornillo / Screw terminals					
Wire flexible (mm²)	1 - 2,5			2,5 - 6		
Weight (g)	122	132	157	185	195	215

- Terminales con tornillo
- Material: PA6/ABS
- Contactos: Niquelados
- IP44 a prueba de salpicaduras
- With screw terminals
- Housing material: PA6/ABS
- Contacts: Nickel-plated contacts
- IP44 Splashproof

3P = 2P + T
4P = 3P + T
5P = 3P + T + N

110V	230V	400V	500V
50/60Hz	50/60Hz	50/60Hz	50/60Hz

Amp	Poles	Pack unit	Poles: 3P 4P 5P Hour P: 4h 4h 4h	Poles: 3P 4P 5P Hour P: 6h 9h 9h	Poles: 3P 4P 5P Hour P: 9h 6h 6h	Poles: 3P 4P 5P Hour P: 7h 7h 7h
-----	-------	-----------	-------------------------------------	-------------------------------------	-------------------------------------	-------------------------------------

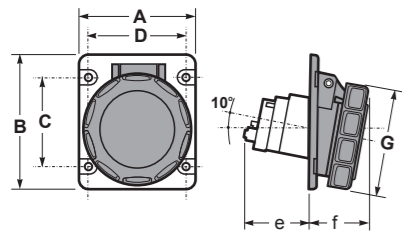
16	Poles	Pack unit	110V	230V	400V	500V		
			3	10	23130	23230	23334	23434
			4	10	23131	23231	23330	23430
32	Poles <td rowspan="3">Pack unit <td>110V</td> <td>230V</td> <td>400V</td> <td>500V</td> </td>	Pack unit <td>110V</td> <td>230V</td> <td>400V</td> <td>500V</td>	110V	230V	400V	500V		
			3	5	23132	23233	23335	23435
			4	5	23133	23234	23332	23432
5	5	23135	23235	23333	23433			



Ref. / Item 23230



SpeedPRO IP67 75x85 16A / 80x95 32A
base de cuadro inclinada 10° / angled panel socket 10°



Poles	16A			32A		
	3	4	5	3	4	5
A	75	75	75	80	80	80
B	85	85	85	95	95	95
C	60	60	60	70	70	70
D	60	60	60	60	60	60
e	45	45	45	60	60	60
f	26	34	37	40	40	40
G	70	78	85	92	92	99,5
Connection type	Conexión por tornillo / Screw terminals					
Wire flexible (mm²)	1 - 2,5			2,5 - 6		
Weight (g)	135	145	165	200	215	245

- Terminales con tornillo
- Material: PA6/ABS
- Contactos: Niquelados
- IP67 Hermético
- With screw terminals
- Housing material: PA6/ABS
- Contacts: Nickel-plated contacts
- IP67 Watertight

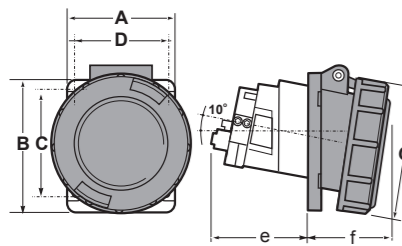
16	Poles	Pack unit	110V	230V	400V	500V		
			3	10	24130	24230	23340	24434
			4	8	24131	24231	24330	24430
32	Poles <td rowspan="3">Pack unit <td>110V</td> <td>230V</td> <td>400V</td> <td>500V</td> </td>	Pack unit <td>110V</td> <td>230V</td> <td>400V</td> <td>500V</td>	110V	230V	400V	500V		
			3	5	24132	24233	24341	24441
			4	5	24133	24234	24332	24432
5	5	24135	24240	24333	24433			



Ref. / Item 24331



SpeedPRO IP67
base de cuadro inclinada 10° / angled panel socket 10°



Poles	63A		
	3	4	5
A	85	85	85
B	100	100	100
C	72	72	72
D	72	72	72
e	83	83	83
f	58	58	58
G	110	110	110
Connection type	Conexión por tornillo / Screw terminals		
Wire flexible (mm²)	6 - 16		
Weight (g)	495	725	552

- Terminales con tornillo allen
- Material: PA6/ABS
- Contactos: Latón
- Para pedir con contacto piloto añadir una *P, ej. 24334P
- IP67 Hermético
- With screw terminals allen
- Housing material: PA6/ABS
- Contacts: Brass
- To order with Pilot contact add please a *P, eg. 24334P
- IP67 Watertight

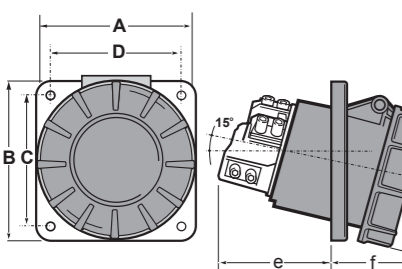
63	Poles	Pack unit	110V	230V	400V	500V		
			3	10	24137	24235	24336	24442
			4	10	24138	24236	24334	24437
125	Poles <td rowspan="3">Pack unit <td>110V</td> <td>230V</td> <td>400V</td> <td>500V</td> </td>	Pack unit <td>110V</td> <td>230V</td> <td>400V</td> <td>500V</td>	110V	230V	400V	500V		
			3	2	24136	24237	24342	24443
			4	2	24140	24239	24337	24436
5	2	24142	24277	24338	24440			



Ref. / Item 24335



SpeedPRO IP67
base de cuadro inclinada 15° / angled panel socket 15°



Poles	125A		
	3	4	5
A	120	120	120
B	130	130	130
C	100	100	100
D	108	108	108
e	92	92	92
f	77	77	77
G	123	123	123
Connection type	Conexión por tornillo / Screw terminals		
Wire flexible (mm²)	16 - 50		
Weight (g)	804	896	995

- Terminales con tornillo allen
- Material: PA6
- Contactos: Latón
- Para pedir con contacto piloto añadir una *P, ej. 24337P
- IP67 Hermético
- With screw terminals allen
- Housing material: PA6
- Contacts: Brass
- To order with Pilot contact add please a *P, eg. 24337P
- IP67 Watertight

125	Poles	Pack unit	110V	230V	400V	500V		
			3	2	24136	24237	24342	24443
			4	2	24140	24239	24337	24436
125	Poles <td rowspan="3">Pack unit <td>110V</td> <td>230V</td> <td>400V</td> <td>500V</td> </td>	Pack unit <td>110V</td> <td>230V</td> <td>400V</td> <td>500V</td>	110V	230V	400V	500V		
			3	2	24136	24237	24342	24443
			4	2	24140	24239	24337	24436
5	2	24142	24277	24338	24440			



Ref. / Item 24337

